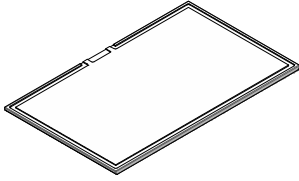


1TOF26

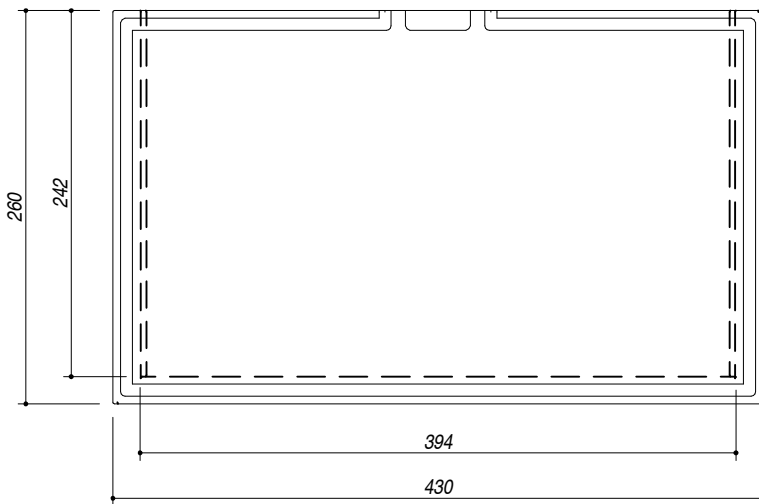
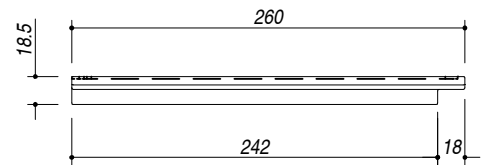
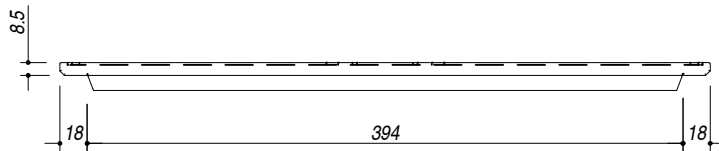
DESCRIZIONE Tagliere rettangolare in polietilene
DESCRIPTION Rectangular polyethylene chopping board

PESO LORDO 1.9 kg **DIMENSIONI IMBALLO** 430x260x20 mm
GROSS WEIGHT **PACKAGING DIMENSIONS**



POLIETILENE
Polyethylene

- Per Vasche Quadre (esclusi cod. 1X1840I, cod. 1X1840S, cod. 1Q1740I, cod. 1Q1740S), lavelli Unique, Mood (esclusi cod. 1LMD91D e cod. 1LMD91S), Easy B_Open, Soul, Flexi
 (For Square Bowls [excluding code 1X1840I, code 1X1840S, code 1Q1740I, code 1Q1740S], Unique, Mood [excluding code 1LMD91D and 1LMD91S], Easy, B_Open, Soul, Flexi sinks)



SCALA DISEGNO 1:5
DRAWING SCALE



TUTTE LE MISURE IN mm
ALL MEASURES IN mm

TOLLERANZA LINEARE: ± 0.5 mm
LINEAR TOLLERANCE

TOLLERANZA ANGOLARE: ± 0.2 °
ANGULAR TOLLERANCE

PER QUALSIASI CONTESTAZIONE SI FARA' RIFERIMENTO ESCLUSIVAMENTE A QUESTO DISEGNO
 For any dispute the company will refer exclusively to this drawing

BARAZZA Barazza s.r.l. - Via Risorgimento, 14 - 31025 Sarano di S.Lucia di P. (TV) Italy
 Tel. +39/0438/62888 - Fax +39/0438/64901 - info@barazzasrl.it - www.barazzasrl.it
 Documento di proprietà aziendale. La Società tutelerà i propri diritti a termini di legge.

